



SAW Components
Data Sheet
CQTSF829M00.00

Customer's Approval Certificate	
Complies with Directive 2002/95/EC (RoHS)	
Please return this Page Via email as a certification of Your approval	
Checked & Approval by:	Date:

Hangzhou Freq-control Electronics Technology Co.,Ltd.

TEL:0086-571-85803723

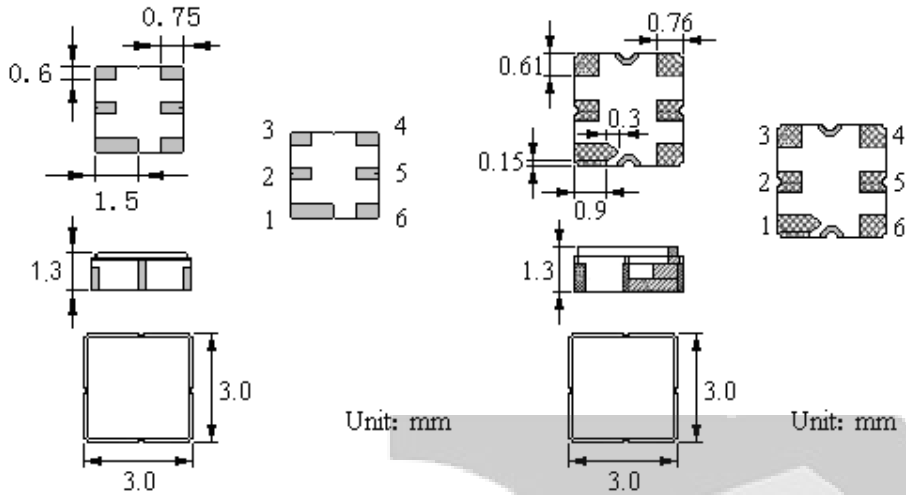
FAX:0086-571-85803724

sales@@csimc-freqcontrol.com

The **CQTSF829M00.00** is a low-loss, compact, and economical surface-acoustic-wave (SAW) filter in a surface-mount ceramic **QCC6C** case with center frequency **829.000** MHz.

1. Package Dimensions

Ceramic Package: **DCC6C**



Pin Configuration

2	Input
5	Output
1, 3, 4, 6	Ground

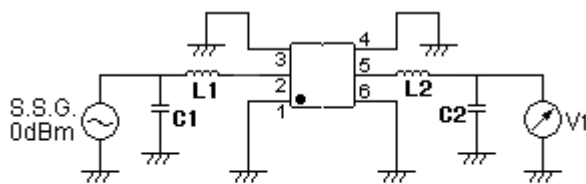
2. Marking

DSF*
.XXXX

- (1) Laser Marking
- (2) D: Manufacture's logo
- (3) SF: SAW Filter
- (4) XXXX: Part Number
- (5) : Terminal 1
- (6) *: Lot number (The code shown below varies in a 4-year cycle)

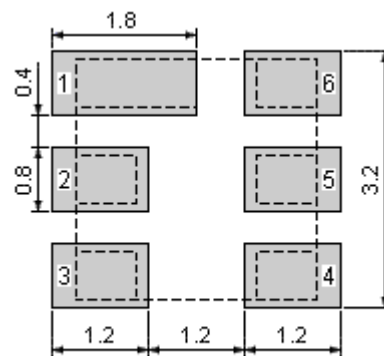
Code	1	2	3	4	5	6	7	8	9	10	11	12
2015	a	b	c	d	e	f	g	h	i	j	k	m
2016	n	p	q	r	s	t	u	v	w	x	y	z
2017	A	B	C	D	E	F	G	H	J	K	L	M
2018	N	P	Q	R	S	T	U	V	W	X	Y	Z

3 . Test Circuit



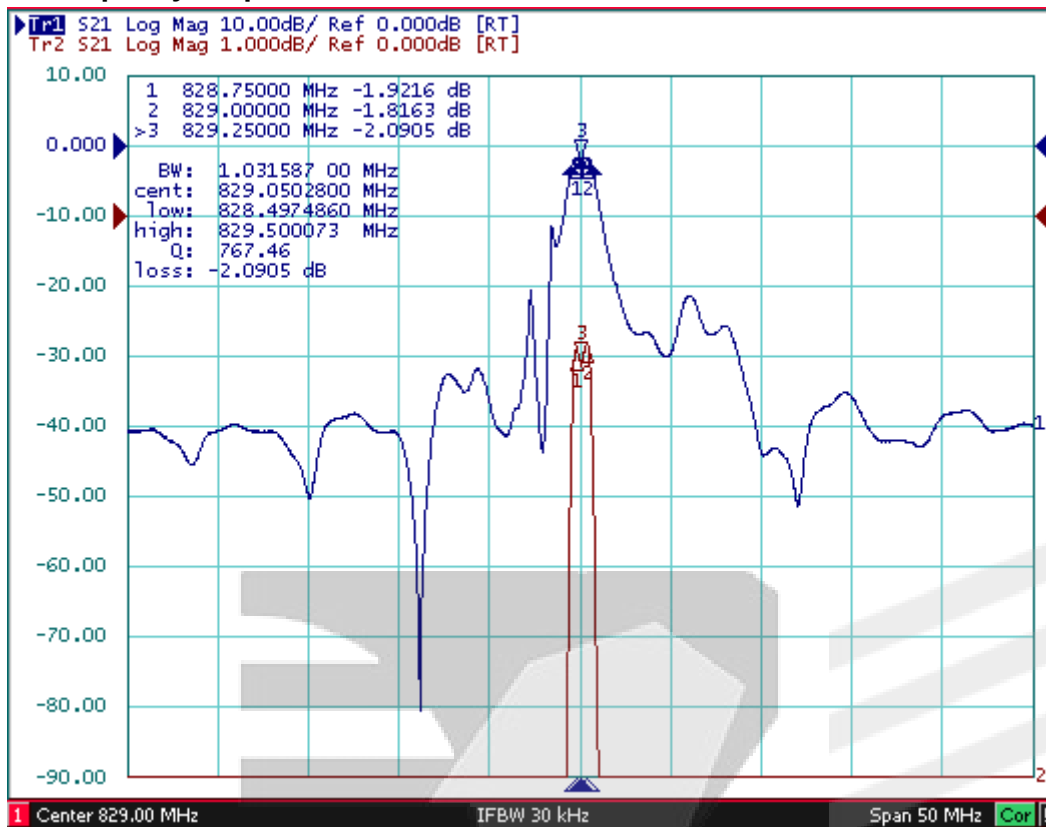
L1=L2=18nH C1=C2=1.8pF

4.Recommended Land Pattern



Unit: mm

5. Typical Frequency Response



6. Performance

6-1. Electronic Characteristics

Characteristic		Min.	Typ.	Max.	Unit
Center frequency	f_c	—	829	—	MHz
1 dB Bandwidth	B_1	750	900	1200	KHz
Insertion attenuation @ 828.80-829.20MHz	I_L	—	2.5	3.5	dB
Pass band Ripple @ 828.80-829.20MHz	P_r		0.5	1.0	dB
attenuation	0MHz—650MHz	40	45		dB
	650MHz—710MHz	38	43		
	821MHz	30	35		
	832MHz	26	30		
	840MHz—850MHz	25	35		
	850MHz—1000MHz	40	45		
INPUT/OUTPUT Impedance		50			Ω
Frequency Temperature Coefficient		0.032			ppm/ $^{\circ}\text{C}^2$

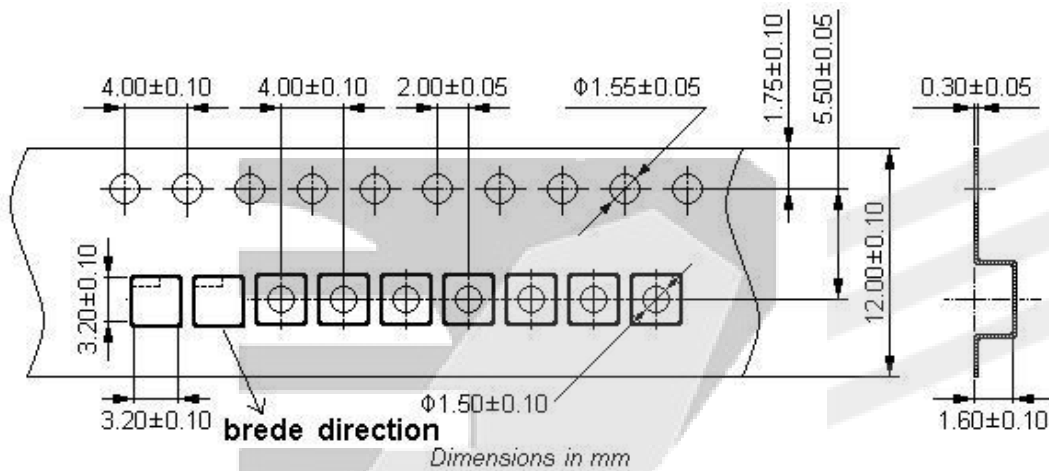
CAUTION: Electrostatic Sensitive Device. Observe precautions for handling!

6-2. Maximum Ratings

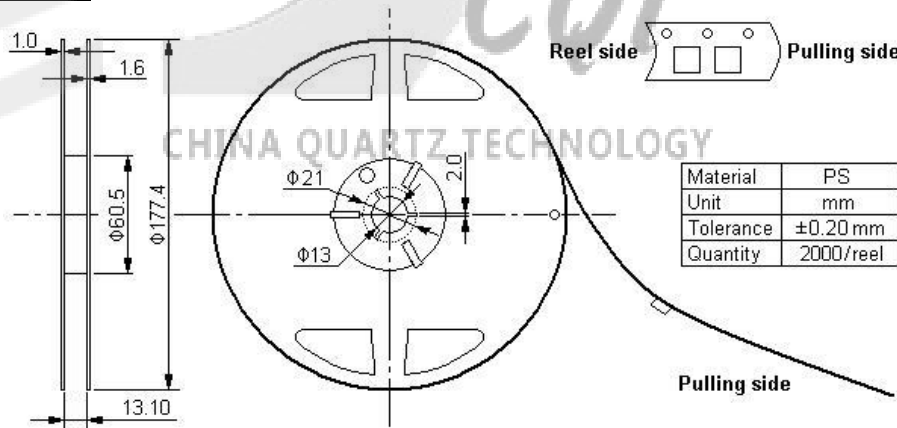
Rating		Value	Unit
Input Power Level	P_{in}	10	dBm
DC Voltage	V_{DC}	12	V
Storage Temperature Range	T_{stg}	-40 to +85	°C
Operable Temperature Range	T_A	-40 to +85	°C

7.Packing Information

Carrier Tape



Reel Dimensions



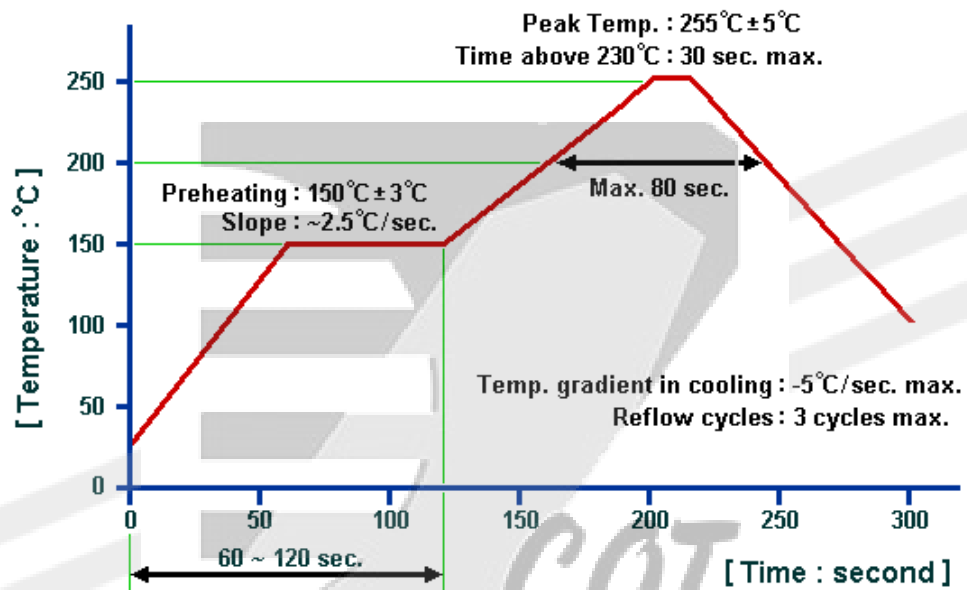
Outer Packing

Type	Quantity	Dimension	Description	Weight
Carton Box I	10000	190×190×95	anti-static plastic bag & carton box 1 reel / bag 5 bags / box (10000 pcs) 10 bags / box (20000 pcs)	0.85
Carton Box II	20000	190×190×190		1.80

Unit: mm

Unit: kg

Recommended Soldering Profile



CHINA QUARTZ TECHNOLOGY